

RESOLUTION NO. 25730

A RESOLUTION AUTHORIZING THE ACCEPTANCE OF A PERMANENT CONSERVATION EASEMENT FROM DEAN CONSTRUCTION, LLC ON PROPERTY DESCRIBED ON THE LEGAL DESCRIPTION AND MAP ATTACHED HERETO AND MADE A PART HEREOF BY REFERENCE, TO BE USED AS PART OF THE SOUTH CHICKAMAUGA GREENWAY AND AUTHORIZING THE ADMINISTRATOR OF THE DEPARTMENT OF PARKS AND RECREATION TO EXECUTE THE DEED OF CONSERVATION EASEMENT RELATIVE TO THIS DONATION.

BE IT RESOLVED BY THE CITY COUNCIL OF THE CITY OF CHATTANOOGA, TENNESSEE, That there be and is hereby authorized the acceptance of a permanent Conservation Easement from Dean Construction, LLC on property described on the legal description and map attached hereto and made a part hereof by reference to be used as part of the South Chickamauga Greenway.

BE IT FURTHER RESOLVED that the Administrator of the Department of Parks and Recreation be and is hereby authorized to execute the Deed of Conservation Easement relative to this donation.

ADOPTED: November 11, 2008

/add

Centerline of Greenway Trail.

Lying in the Northeast quarter of Section One (1), Township Two (2), Range Four (4), West of the Basis Line, Ocoee District, City of Chattanooga, Hamilton County, Tennessee, and described as follows:

BEGINNING AT A point on the westerly side of Harrison Pike (100' Wide), at a point along the easterly line of Community Lot One (1), Waterhaven Subdivision, Planned Unit Development (P.U.D.), as recorded in Plat Book 80, Pages 176 to 180 in the Register's Office of Hamilton County, Tennessee; Said point of beginning being located approximately 132.7 feet south from the northeast corner of said Community Lot 1, and Centerline of the South Chickamauga Creek; Said point having coordinates: N 274,288.06, E 2,199,572.62 feet on the Tennessee Grid; Thence from said POINT OF BEGINNING, passing through Community Lots 1, 48 and 143 of said Waterhaven Subdivision., along the physical centerline of a certain 12' wide paved trail, the following 34 courses and distances:

- 1) South 76 degrees 14 minutes 56 seconds West, 19.00 feet to a point;
- 2) South 23 degrees 33 minutes 26 seconds West, 105.39 feet to a point;
- 3) South 26 degrees 26 minutes 59 seconds West, 53.02 feet to a point;
- 4) South 42 degrees 38 minutes 58 seconds West, 77.74 feet to a point;
- 5) Along an arc curving to the Right, having a radius of 110.00 feet and an arc length of 123.19 feet (Chord: South 74 degrees 43 minutes 58 seconds West, 116.85 feet), to a point;
- 6) North 73 degrees 11 minutes 03 seconds West, 374.43 feet to a point;
- 7) North 79 degrees 44 minutes 11 seconds West, 93.09 feet to a point;
- 8) North 73 degrees 32 minutes 20 seconds West, 176.86 feet to a point;
- 9) North 72 degrees 00 minutes 11 seconds West, 124.27 feet to a point;
- 10) North 79 degrees 12 minutes 46 seconds West, 410.93 feet to a point;
- 11) North 84 degrees 01 minute 57 seconds West, 346.69 feet to a point;
- 12) South 87 degrees 23 minutes 15 seconds West, 498.67 feet to a point;
- 13) Along an arc curving to the Right, having a radius of 140.00 feet and an arc length of 43.60 feet (Chord: North 83 degrees 41 minutes 24 seconds West, 43.43 feet), to a point;
- 14) North 74 degrees 46 minutes 04 seconds West, 10.61 feet to a point;
- 15) Along an arc curving to the Left, having a radius of 270.00 feet and an arc length of 91.86 feet (Chord: North 84 degrees 30 minutes 51 seconds West, 91.42 feet), to a point;
- 16) South 85 degrees 44 minutes 22 seconds West, 177.08 feet to a point;
- 17) Along an arc curving to the Left, having a radius of 250.00 feet and an arc length of 24.81 feet (Chord: South 82 degrees 53 minutes 48 seconds West, 24.80 feet), to a point;
- 18) South 80 degrees 03 minutes 14 seconds West, 337.11 feet to a point;
- 19) Along an arc curving to the Right, having a radius of 40.00 feet and an arc length of 44.33 feet (Chord: North 68 degrees 11 minutes 48 seconds West, 42.10 feet), to a point;
- 20) North 36 degrees 26 minutes 49 seconds West, 73.85 feet to a point;
- 21) Along an arc curving to the Left, having a radius of 120.00 feet and an arc length of 84.70 feet (Chord: North 56 degrees 40 minutes 01 second West, 82.95 feet), to a point;
- 22) North 76 degrees 53 minutes 13 seconds West, 97.68 feet to a point;

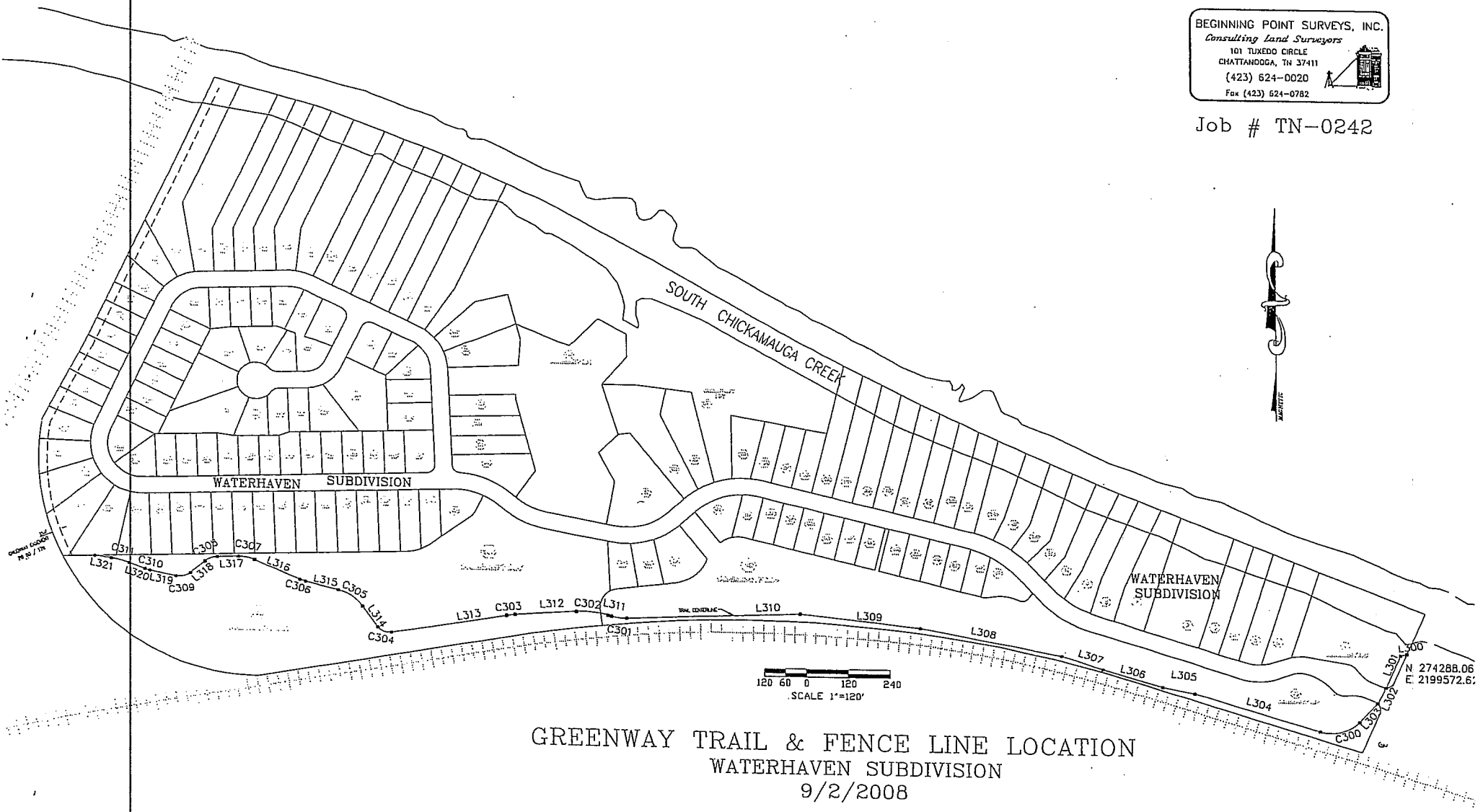
23) Along an arc curving to the Right, having a radius of 100.00 feet and an arc length of 16.96 feet (Chord: North 72 degrees 01 minute 44 seconds West, 16.94 feet), to a point;
24) North 67 degrees 10 minutes 14 seconds West, 141.79 feet to a point;
25) Along an arc curving to the Left, having a radius of 110.00 feet and an arc length of 47.89 feet (Chord: North 79 degrees 38 minutes 30 seconds West, 47.51 feet), to a point;
26) South 87 degrees 53 minutes 14 seconds West, 60.91 feet to a point;
27) Along an arc curving to the Left, having a radius of 60.00 feet and an arc length of 39.13 feet (Chord: South 69 degrees 12 minutes 13 seconds West, 38.44 feet), to a point;
28) South 50 degrees 31 minutes 12 seconds West, 55.60 feet to a point;
29) Along an arc curving to the Right, having a radius of 50.00 feet and an arc length of 44.15 feet (Chord: South 75 degrees 48 minutes 49 seconds West, 42.73 feet), to a point;
30) North 78 degrees 53 minutes 34 seconds West, 76.71 feet to a point;
31) Along an arc curving to the Right, having a radius of 100.00 feet and an arc length of 15.69 feet (Chord: North 74 degrees 23 minutes 50 seconds West, 15.68 feet), to a point;
32) North 69 degrees 54 minutes 06 seconds West, 47.65 feet to a point;
33) Along an arc curving to the Left, having a radius of 240.00 feet and an arc length of 54.62 feet (Chord: North 76 degrees 25 minutes 19 seconds West, 54.50 feet), to a point;
34) North 82 degrees 56 minutes 31 seconds West, 49.01 feet to the point of termination, said point being at coordinates: N 274,501.06, E 2,195,802.29 on the Tennessee Grid, and being a point on the northerly line of Community Lot 143 of the aforementioned Waterhaven Subdivision., located approximately 94.6 feet east, from the northwesterly corner of Community Lot 143.

THIS DESCRIPTION BEING the physical centerline of the existing twelve (12) foot wide paved trail, lying within the twenty-five (25) foot wide Greenway Easement, as outlined in General Note # 32 (Sheet 1 of 5) of the recorded plats for Waterhaven Subdivision, found on Plat Book 80, Page 176 in the Register's Office of Hamilton County, TN.

BEGINNING POINT SURVEYS, INC.
Consulting Land Surveyors
 101 TUXEDO CIRCLE
 CHATTANOOGA, TN 37411
 (423) 624-0020
 Fax (423) 624-0782



Job # TN-0242



GREENWAY TRAIL & FENCE LINE LOCATION
 WATERHAVEN SUBDIVISION
 9/2/2008

N 274288.06
 E 2199572.6'